

## Summary

This guide provides an instruction on how to use the eGovFrame IDE.

## Step 1. Installation

### Download

1. Browse to the eGovFrame website (<http://www.egovframe.go.kr/> [<http://www.egovframe.go.kr/>], <http://www.egovframe.org/> [<http://www.egovframe.org/>]), sign in, and choose Download > Development Environment.



2. Choose the desired development environment.

### 개발환경 다운로드

#### Release Note

2011.09.30 : 개발환경의 최신버전은 2.0.0이며, 이전 버전에 비하여 다음과 같은 점들이 변경되었습니다.

- 개발자용 개발환경 경량화  
전자정부 개발환경에 포함된 의존성을 최소화 시켜서 필요한 기능만 다운로드 및 설치 할 수 있도록 변경하였습니다.
- 서버용 개발환경 경량화  
전자정부 개발환경에 포함된 서버용 개발환경 구성 도구를 다운로드 받을 수 있도록 하였습니다.
- 오픈소스 버전업그레이드  
표준프레임워크에 포함된 오픈소스의 버전을 하위호환성을 유지하는 조건에서 최신버전으로 업그레이드 했습니다.

#### 개발환경 2.0.0 다운로드

발리츠 일자 : 2011.10.28

- 개발자용 개발환경(Implementation Tool) Light Version 2.0.0
- 개발자용 개발환경(Implementation Tool) Full Version 2.0.0
- 서버용 개발환경(Development Tool - Unix) Version 2.0.0
- 서버용 개발환경(Development Tool - Windows) Version 2.0.0
- 이슈관리(Issue Management) Version 2.0.0
- 배포도구(Deployment Tool) Version 2.0.0
- 테스트도구(Test Tool) Version 2.0.0
- 개발환경 메인 Version 2.0.0

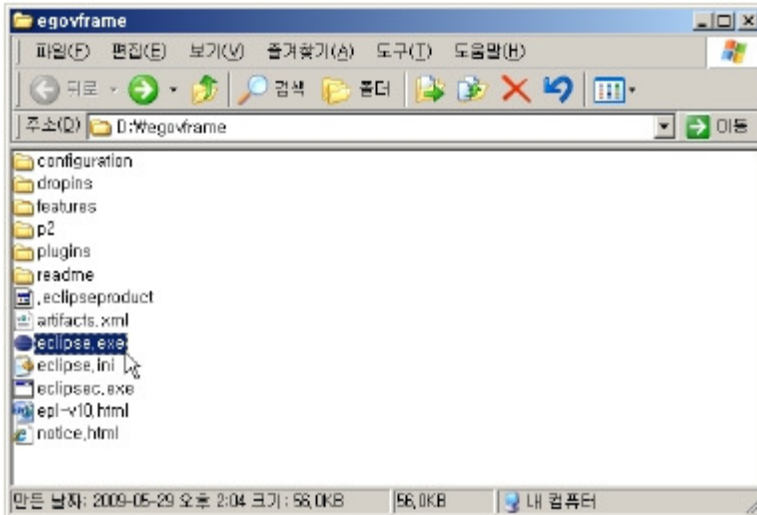
3. Download and unarchive the attached file.



✓ Installing to C: or D: is recommended.

## Running the IDE

1. Run Eclipse (eclipse.exe).



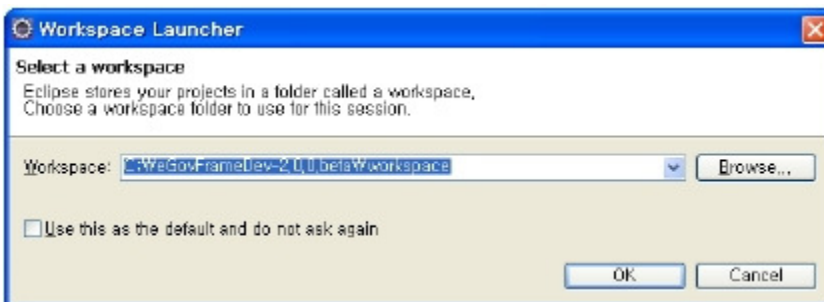
✓ If "Fail to create Java Virtual Machine" error occurs, you must set the JVM path inside the eclipse.ini file within the installed directory. Also, Java version 1.5 or higher must be installed before using the IDE.

```

16 openFile
17 -vm
18 C:/Program Files/Java/jdk1.5.0_22/bin/javaw.exe
19 -vmargs
20 -Dorg1.requiredJavaVersion=1.5
21 -Xms40m
22 -Xmx512m
23 -Dfile.encoding=UTF-8

```

1. Choose the unzipped eGovFrame workspace from earlier when the Workspace Launcher popup shows up.



✓ The eGovFrame-related settings should be already preset in your downloaded Eclipse, so it is advantageous to stick with the default path (C:\egovframe\dev-2.0.0\workspace) for smooth running.

## Switching the Perspective

1. Once Eclipse launches successfully, ensure that the Perspective on top-right corner is set correctly to eGovFrame.



✓ If it is not the case, perform the following:

- Click on the textless icon leftmost to the Perspectives, and choose "Other... > Open Perspective > eGovFrame".

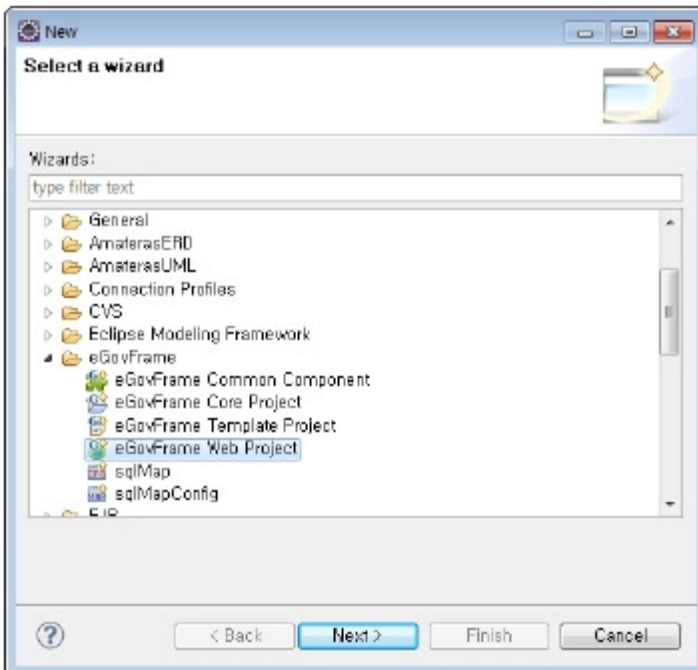


## Step 2. Creating and running a project

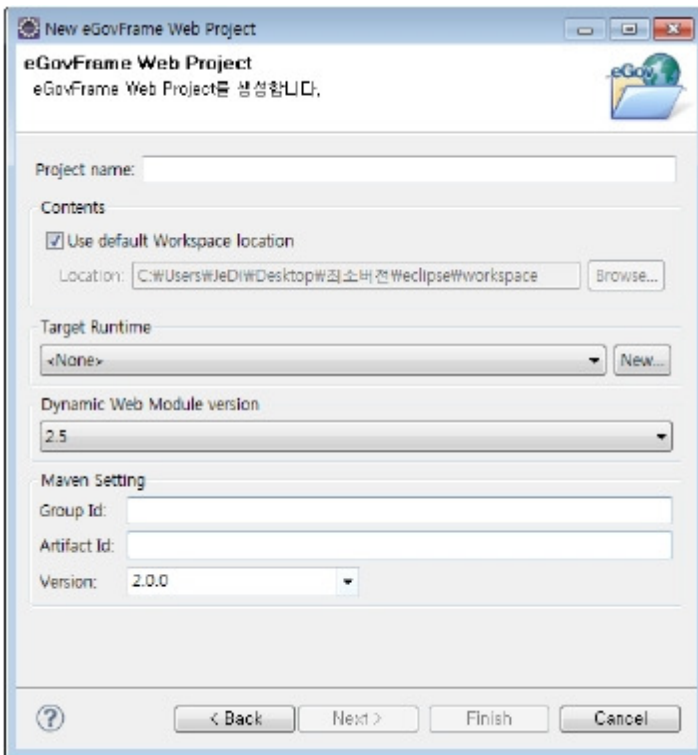
---

### Creating a project

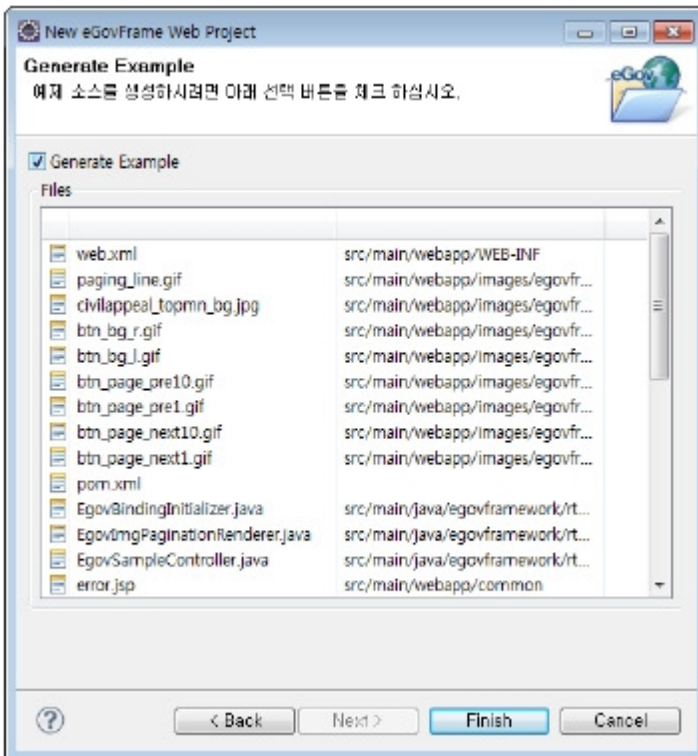
1. Choose "File >New >eGovFrameWeb Project" from the Menu bar.  
Or, press Ctrl+N to open the New... Wizard, and choose eGovFrame>eGovFrame Web Project, and click the "Next" button.



- . Enter the project name and Maven settings, and then click the "Next" button.



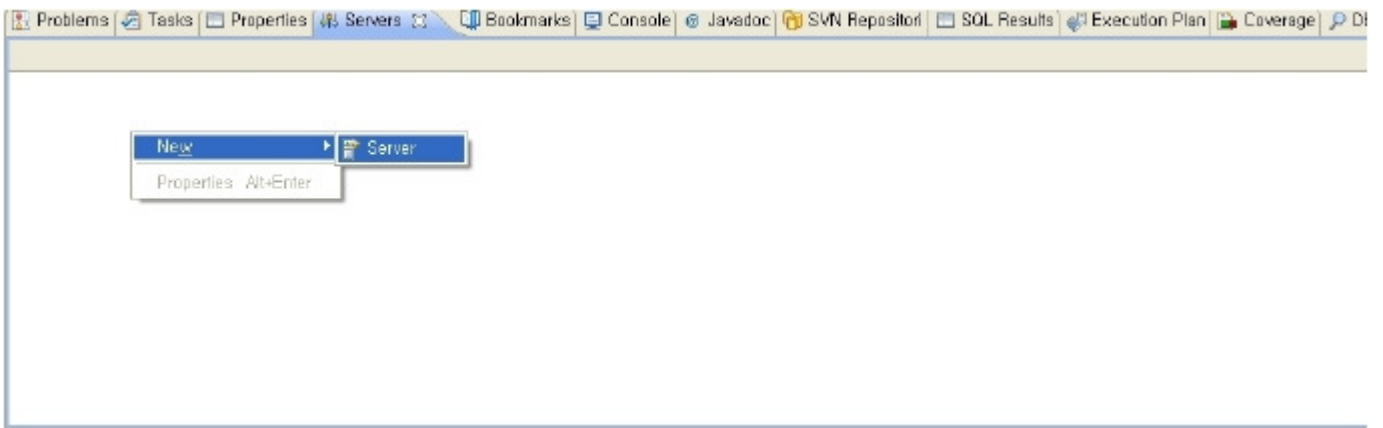
3. Check the Generate Example checkbox, and click the "Finish" button



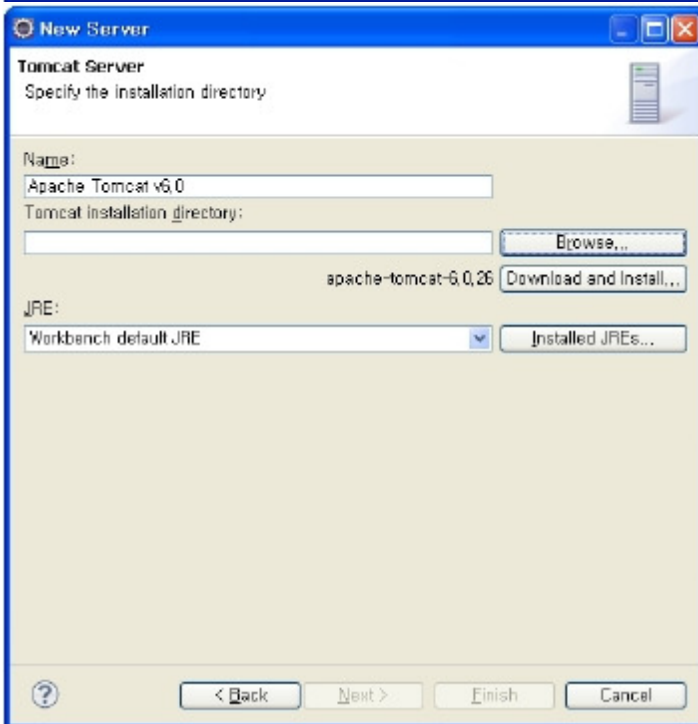
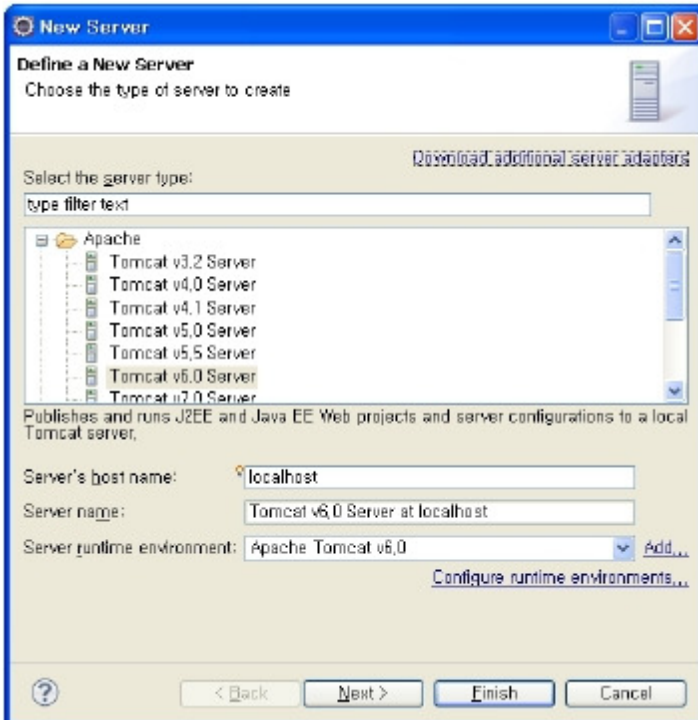
## Server installation

- Try installing the Tomcat server.

1 Right-click on the Servers tab on the bottom of the Eclipse application, and choose New > Server.

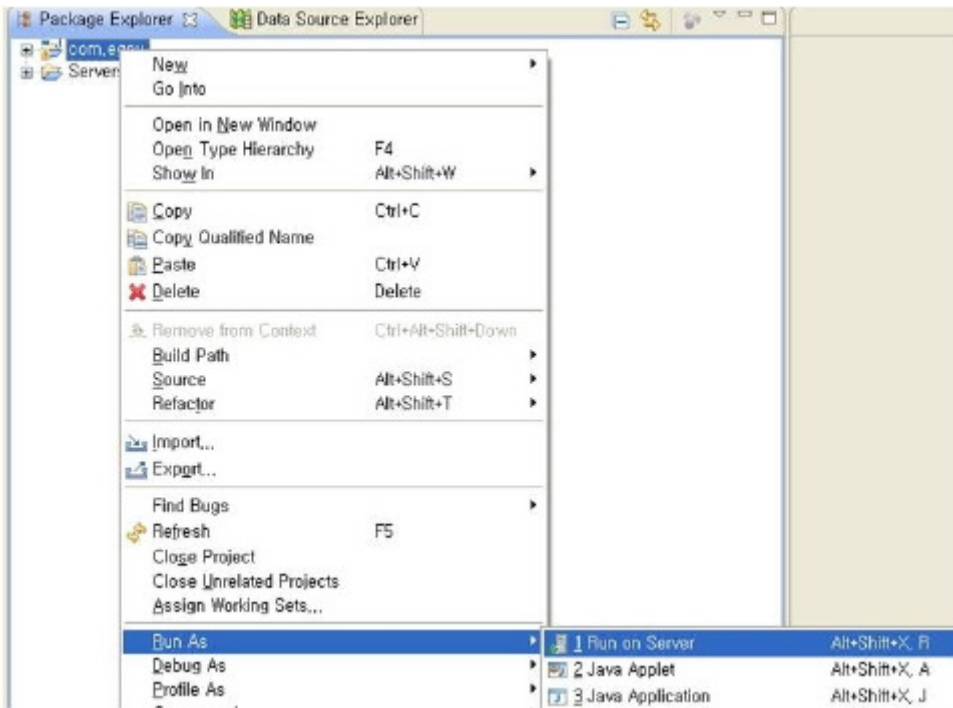


2. Choose Apache > Tomcat v6.0 Server, then click the "next" button, choose the "Download and Install" button to complete server installation.

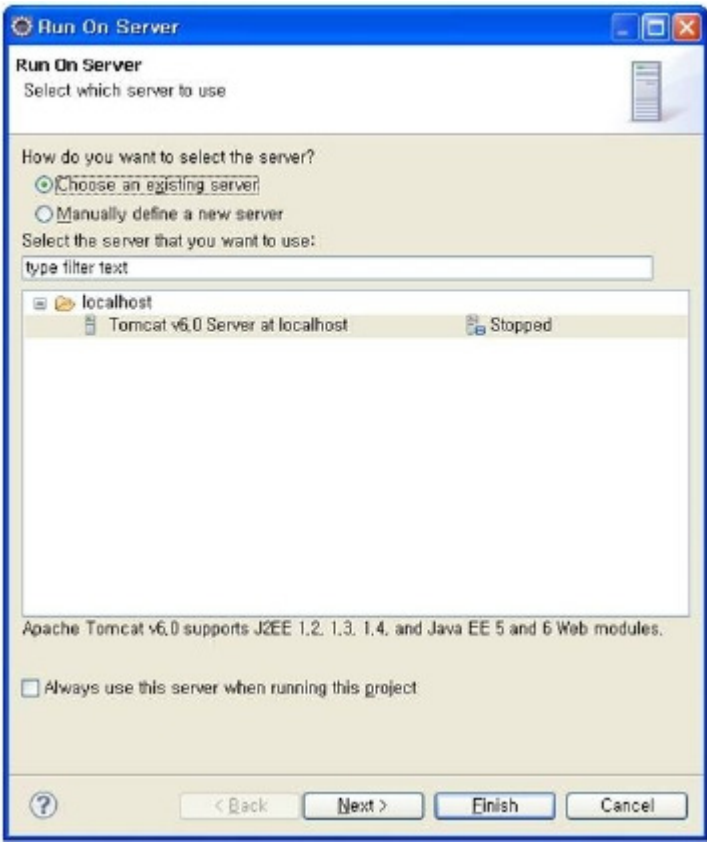


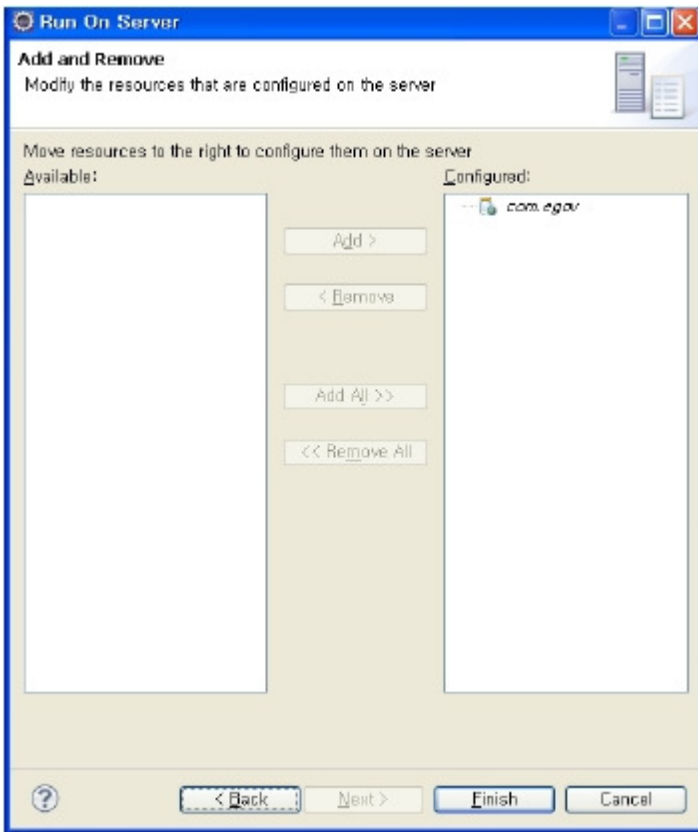
## Running the project

11. Right-click on the project to run, and choose Run As > Run on Server.

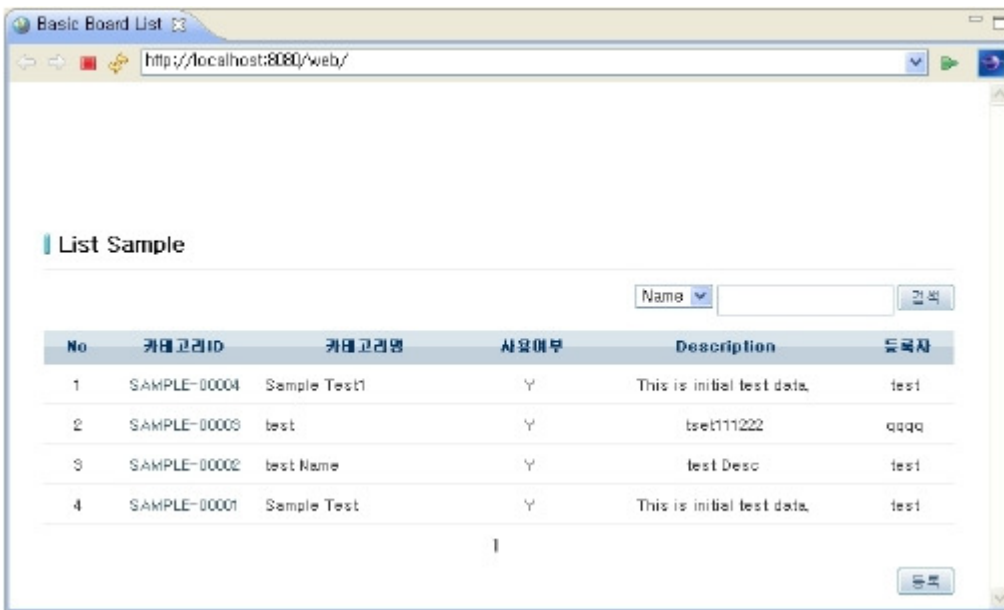


2. Check the "Choose an existing server" radiobutton, select the server you have installed earlier, and then click the "Next" button to add the project.





3. Make sure that you get the Basic Board List up and running as below.



✓ If the "Could not open JDBC Connection for transaction" error message pops up, connect to the HSQLDB, referring to the HSQLDB settings guide to connect to HSQLDB.

## Other settings

### Changing the DB information

- The eGovFrame supports MySQL, Oracle, Altibase, and Tiberio databases. This guide will run you through an example of how to configure MySQL database information.

1. Change the sql-map-config.xml file to tweak the database info of your project

```

sql-map-config.xml [3]
<?xml version="1.0" encoding="UTF-8">
<!DOCTYPE sqlMapConfig PUBLIC "-//ibatis.com//DTD SQL Map Config 2.0//EN"
"http://www.ibatis.com/dtd/sql-map-config-2.dtd">

<sqlMapConfig>
<!-- <sqlMap resource="egovframework/sqlmap/rte/sample/EgovSample_Sample_SQL.xml"/> -->
<sqlMap resource="egovframework/sqlmap/rte/sample/EgovSample_Sample_SQL_mysql.xml"/>
<!-- <sqlMap resource="egovframework/sqlmap/rte/sample/EgovSample_Sample_SQL_oracle.xml"/> -->
</sqlMapConfig>

```

SQL Map Config sql-map-config.xml

2. Change the context-datasource.xml file as below and enter your database information.

```

context-datasource.xml [3]
<?xml version="1.0" encoding="UTF-8">
<beans xmlns="http://www.springframework.org/schema/beans"
xmlns:xsi="http://www.w3.org/2001/XMLSchema-instance"
xsi:schemaLocation="http://www.springframework.org/schema/beans http://www.springframework.org/schema/beans/spring-bea-

<!-- hsqldb -->
<bean id="dataSource" class="org.apache.commons.dbcp.BasicDataSource" destroy-method="close">
<property name="driverClassName" value="net.sf.log4jdbc.DriverSpy"/>
<property name="url" value="jdbc:log4jdbc:hsqldb:hsqldb://localhost/sampledb"/>
<property name="username" value="sa"/>
</bean> -->

<!-- mysql -->
<bean id="dataSource" class="org.apache.commons.dbcp.BasicDataSource" destroy-method="close">
<property name="driverClassName" value="com.mysql.jdbc.Driver"/>
<property name="url" value="jdbc:mysql://db2:1621/rte"/>
<property name="username" value="rte"/>
<property name="password" value="rte01"/>
</bean>

<!-- oracle

```

Design Source

3. Add the following dependency to the pom.xml file as below.

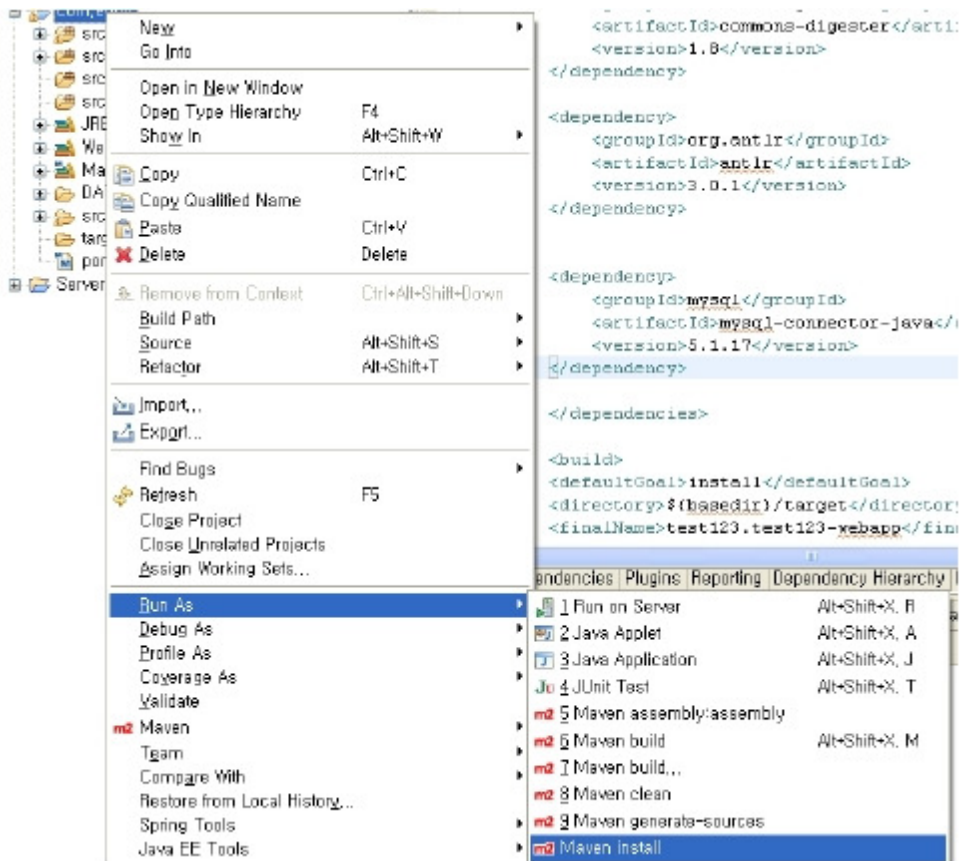
```

<dependency>
<groupId>mysql</groupId>
<artifactId>mysql-connector-java</artifactId>
<version>5.1.17</version>
</dependency>

```

4. Right-click on the project, and choose "Run As > Maven install."





## Connecting to the Data Source Explorer

Refer to the [Guideline for the connecting to the Data Source Explorer](#).

### Multi-language support

✓ In order to switch over the language setting to English, modify the eclipse.ini file as below

-Duser.language=en  
-Duser.country=US

```

0 10 20 30 40 50 60 70 80 90 100
16 openFile
17 -vm
18 C:/Program Files/Java/jdk1.5.0_22/bin/javaw.exe
19 -vmargs
20 -Duser.language=en
21 -Duser.country=US
22 -Dorg.eclipse.swt.graphics.requiredJavaVersion=1.5
23 -Xms40m
24 -Xmx512m
25 -Dfile.encoding=UTF-8

```

✓ Switchover the language setting as below if you want to use the Korean display settings.

-Duser.language=ko  
-Duser.country=KR